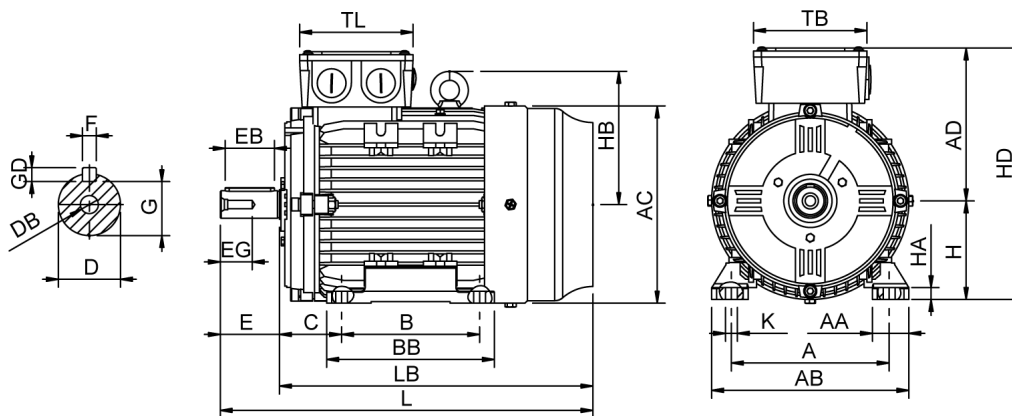


Data Sheet

Itemnumber.....: 6021320100



A = 216	AC = 260	BB = 172	DB = M12	EG = 30	GD = 8	HB = 180	L = 475	TL = 138
AA = 54	AD = 192	C = 89	E = 80	F = 10	H = 132	HD = 324	LB = 395	
AB = 264	B = 140	D = 38	EB = 70	G = 33	HA = 15	K = 12	TB = 138	

Version

Type.....: HMA4 132S1-2
Design.....: Induction motor
Standard series.....: IEC 60034
Phase / Voltage range.....: 3~ / Low

Electrical design

Efficiency.....: IE4
Pole.....: 2
Power at 50 Hz (kW).....: 5,50
Hz.....: 50
Voltage.....: 400VD/690VY
Winding voltage.....: 400VD/690VY 50 Hz
Power output (kW).....: 5,50
Duty.....: S1
Insulation class.....: F
Temperature rise.....: B

Mechanical design

Frame size.....: 132
Mounting.....: B3
Rain cap.....: No
Protection class.....: IP55
Cooling method.....: IC411/TEFC
External grounding.....: Yes
Drain hole.....: Yes
Frame material.....: Aluminium
Material approval.....: None
Shaft.....: IEC standard
Key.....: Closed key
Balancing.....: Half key balancing
Vibration class.....: Grade-A
Weight (kg).....: 45,0

Environment condition

Ambient temp. min. (°C).....: -20
Ambient temp. max. (°C).....: 40
Altitude (mtr up to).....: 1000

Bearing

DE Bearing.....: 6208-ZZ/C3
NDE Bearing.....: 6206-ZZ/C3
Fixed bearing.....: DE

Terminal box

Tbox position.....: Top
Cable entry direction.....: Right (from DE)
Cable entry
Main.....: 2 x M32x1,5
Plastic blindcaps
Accessory.....: 1 x M20x1,5
Plastic blindcap
Terminal board thread.....: M5

Test values

Rotor inertia (kgm²).....: 0,028
Noise level (dB(A)).....: 68
Starting time (sec.).....: 0,16

Motor protection

Thermal protection main.....: PTC 3x 155 dgr
Thermal protection second.....: None
Space heater.....: None None
Temperature detector.....: No
SPM.....: No
IR wire.....: No
Tropical insulation.....: No

Explosion protection

According to.....: None
Type of protection.....: None

General

Direction of rotation.....: CW
Painting.....: RAL 9005
Nameplate.....: Multivoltage
Special packing.....: No
Special requirements.....: No

Rated power (kW)	5,50	5,35	6,60	6,40
Frequency (Hz)	50	50	60	60
Voltage (V)	400 690	380 660	480 830	440
Connection	D Y	D Y	D Y	D
Full load current (A)	9,80 5,70	10,2 5,85	9,80 5,70	10,2
Speed (rpm)	2930	2930	3520	3520
Power factor cos(phi)	0,89	0,90	0,89	0,90
Efficiency, 100/75/50 (%)	90,9/90,7/89,9	90,9/90,7/89,9	90,9/90,7/89,9	90,3/90,0/89,2
Ist/In	9,60	8,45	9,60	8,85
Full load torque (Nm)	18,0	17,4	18,0	17,4
Tst/Tn	3,20	3,00	3,20	2,75
Tmax/Tn	3,80	3,55	3,80	3,30
Duty	S1	S1	S1	S1
Ambient temp. (°C)	40	45	40	45