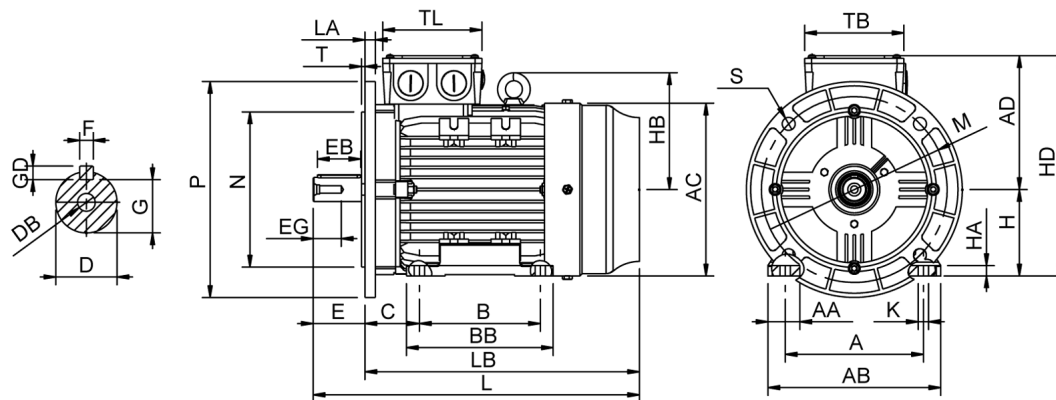


Data Sheet

Itemnumber..... 6021320400



A = 216	AC = 260	BB = 172	DB = M12	EG = 30	GD = 8	HB = 180	L = 475	M = 265	S = 4-Ø14.5	TL = 138
AA = 54	AD = 192	C = 89	E = 80	F = 10	H = 132	HD = 324	LA = 14	N = 230	T = 4	
AB = 264	B = 140	D = 38	EB = 70	G = 33	HA = 15	K = 12	LB = 395	P = 300	TB = 138	

Version

Type..... HMA4 132S1-2
Design..... Induction motor
Standard series..... IEC 60034
Phase / Voltage range..... 3~ / Low

Electrical design

Efficiency..... IE4
Pole..... 2
Power at 50 Hz (kW)..... 5,50
Hz..... 50
Voltage..... 400VD/690VY
Winding voltage..... 400VD/690VY 50 Hz
Power output (kW)..... 5,50
Duty..... S1
Insulation class..... F
Temperature rise..... B

Mechanical design

Frame size..... 132
Mounting..... B35
Rain cap..... No
Protection class..... IP55
Cooling method..... IC411/TEFC
External grounding..... Yes
Drain hole..... Yes
Frame material..... Aluminium
Material approval..... None
Shaft..... IEC standard
Key..... Closed key
Balancing..... Half key balancing
Vibration class..... Grade-A
Weight (kg)..... 45,0

Environment condition

Ambient temp. min. (°C)..... -20
Ambient temp. max. (°C)..... 40
Altitude (mtr up to)..... 1000

Bearing

DE Bearing..... 6208-ZZ/C3
NDE Bearing..... 6206-ZZ/C3
Fixed bearing..... DE

Terminal box

Tbox position..... Top
Cable entry direction..... Right (from DE)
Cable entry
Main..... 2 x M32x1,5
Plastic blindcaps
Accessory..... 1 x M20x1,5
Plastic blindcap
Terminal board thread..... M5

Test values

Rotor inertia (kgm²)..... 0,028
Noise level (dB(A))..... 68
Starting time (sec.)..... 0,16

Motor protection

Thermal protection main..... PTC 3x 155 dgr
Thermal protection second.. None
Space heater..... None None
Temperature detector..... No
SPM..... No
IR wire..... No
Tropical insulation..... No

Explosion protection

According to..... None
Type of protection..... None

General

Direction of rotation..... CW
Painting..... RAL 9005
Nameplate..... Multivoltage
Special packing..... No
Special requirements..... No

Rated power (kW)	5,50	5,35	6,60	6,40
Frequency (Hz)	50	50	60	60
Voltage (V)	400 690	380 660	480 830	440
Connection	D Y	D Y	D Y	D
Full load current (A)	9,80 5,70	10,2 5,85	9,80 5,70	10,2
Speed (rpm)	2930	2930	3520	3520
Power factor cos(phi)	0,89	0,90	0,89	0,90
Efficiency, 100/75/50 (%)	90,9/90,7/89,9	90,9/90,7/89,9	90,9/90,7/89,9	90,3/90,0/89,2
Ist/In	9,60	8,45	9,60	8,85
Full load torque (Nm)	18,0	17,4	18,0	17,4
Tst/Tn	3,20	3,00	3,20	2,75
Tmax/Tn	3,80	3,55	3,80	3,30
Duty	S1	S1	S1	S1
Ambient temp. (°C)	40	45	40	45