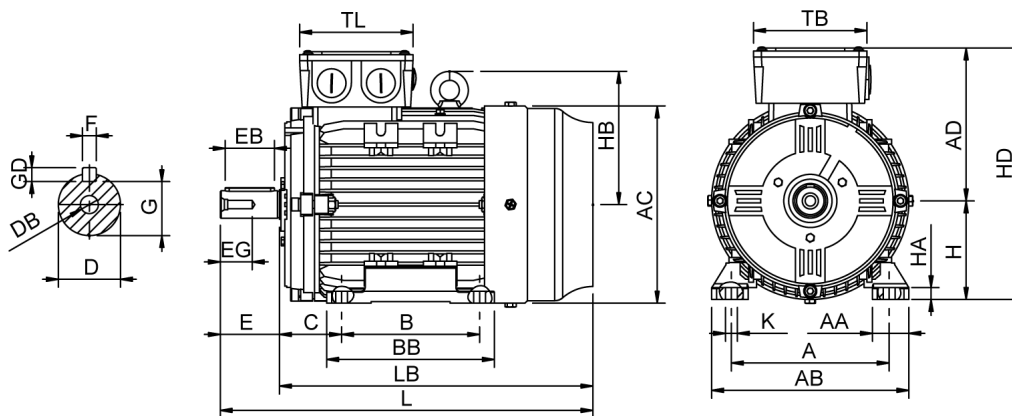


# Data Sheet

Itemnumber.....: 6041320100



A = 216	AC = 260	BB = 172	DB = M12	EG = 30	GD = 8	HB = 180	L = 475	TL = 138
AA = 54	AD = 192	C = 89	E = 80	F = 10	H = 132	HD = 324	LB = 395	
AB = 264	B = 140	D = 38	EB = 70	G = 33	HA = 15	K = 12	TB = 138	

## Version

Type.....: HMA4 132S-4  
Design.....: Induction motor  
Standard series.....: IEC 60034  
Phase / Voltage range.....: 3~ / Low

## Electrical design

Efficiency.....: IE4  
Pole.....: 4  
Power at 50 Hz (kW).....: 5,50  
Hz.....: 50  
Voltage.....: 400VD/690VY  
Winding voltage.....: 400VD/690VY 50 Hz  
Power output (kW).....: 5,50  
Duty.....: S1  
Insulation class.....: F  
Temperature rise.....: B

## Mechanical design

Frame size.....: 132  
Mounting.....: B3  
Rain cap.....: No  
Protection class.....: IP55  
Cooling method.....: IC411/TEFC  
External grounding.....: Yes  
Drain hole.....: Yes  
Frame material.....: Aluminium  
Material approval.....: None  
Shaft.....: IEC standard  
Key.....: Closed key  
Balancing.....: Half key balancing  
Vibration class.....: Grade-A  
Weight (kg).....: 45,0

## Environment condition

Ambient temp. min. (°C).....: -20  
Ambient temp. max. (°C).....: 40  
Altitude (mtr up to).....: 1000

## Bearing

DE Bearing.....: 6208-ZZ/C3  
NDE Bearing.....: 6206-ZZ/C3  
Fixed bearing.....: DE

## Terminal box

Tbox position.....: Top  
Cable entry direction.....: Right (from DE)  
Cable entry  
Main.....: 2 x M32x1,5  
Plastic blindcaps  
Accessory.....: 1 x M20x1,5  
Plastic blindcap  
Terminal board thread.....: M5

## Test values

Rotor inertia (kgm²).....: 0,042  
Noise level (dB(A)).....: 57  
Starting time (sec.).....: 0,07

## Motor protection

Thermal protection main.....: PTC 3x 155 dgr  
Thermal protection second.....: None  
Space heater.....: None None  
Temperature detector.....: No  
SPM.....: No  
IR wire.....: No  
Tropical insulation.....: No

## Explosion protection

According to.....: None  
Type of protection.....: None

## General

Direction of rotation.....: CW  
Painting.....: RAL 9005  
Nameplate.....: Multivoltage  
Special packing.....: No  
Special requirements.....: No

Rated power (kW)	5,50	5,35	6,60	6,40
Frequency (Hz)	50	50	60	60
Voltage (V)	400 690	380 660	480 830	440
Connection	D Y	D Y	D Y	D
Full load current (A)	10,8 6,25	11,2 6,45	10,8 6,25	11,2
Speed (rpm)	1460	1460	1760	1760
Power factor cos(phi)	0,80	0,81	0,80	0,82
Efficiency, 100/75/50 (%)	91,9/91,2/90,0	91,9/91,2/90,0	91,9/91,2/90,0	91,3/90,6/89,3
Ist/In	9,30	8,20	9,30	8,55
Full load torque (Nm)	36,0	35,0	36,0	35,0
Tst/Tn	3,20	3,00	3,20	2,75
Tmax/Tn	3,30	3,05	3,30	2,85
Duty	S1	S1	S1	S1
Ambient temp. (°C)	40	45	40	45